

# Murrumbateman Landcare Linking Biodiversity 2012 - 2017



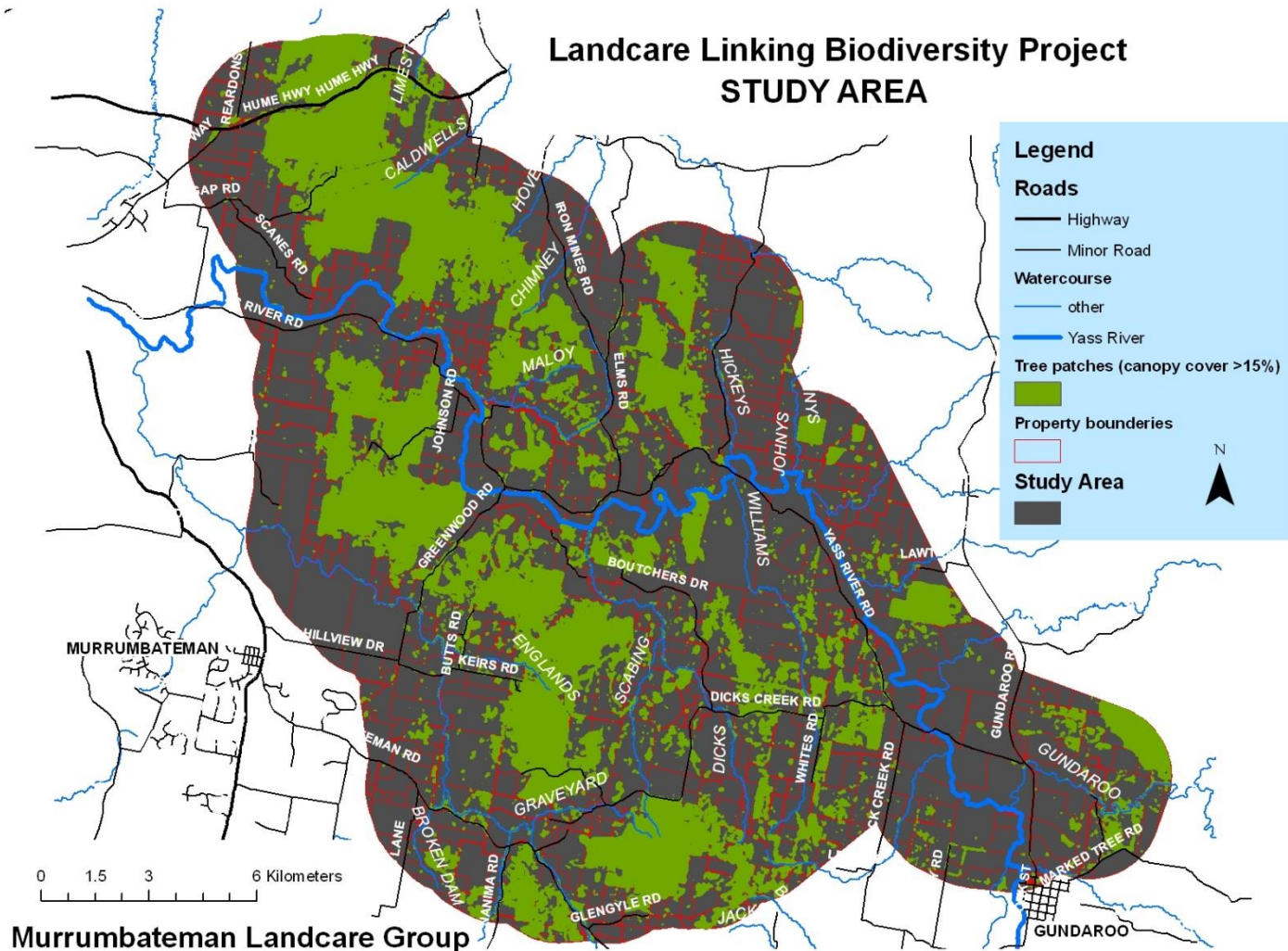


**Australian Government**

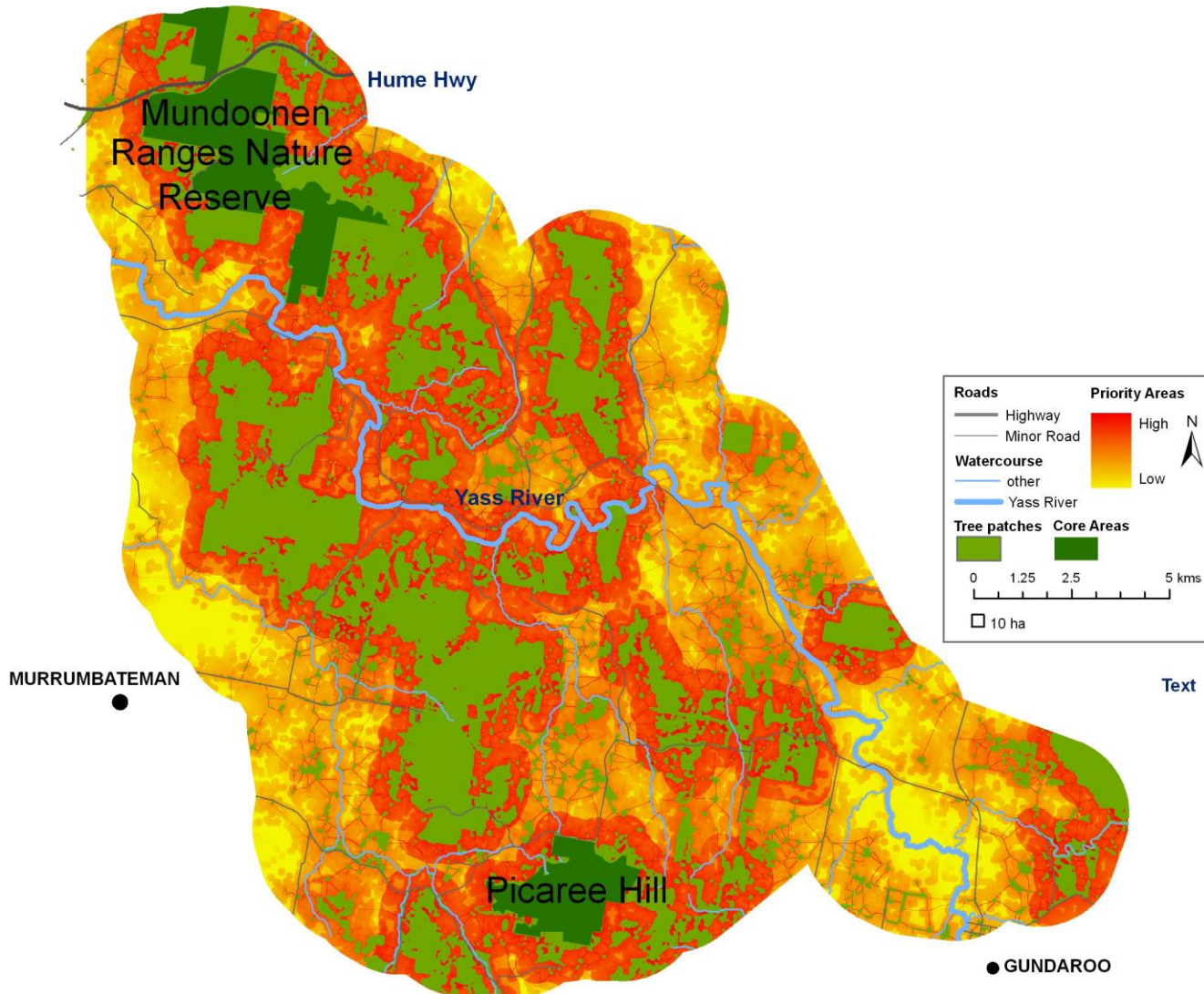


# Project target area and aims

To protect, enhance and connect the landscape between Picaree Hill and Mundoonen Ranges (approx 39,000ha)



# Priority Areas

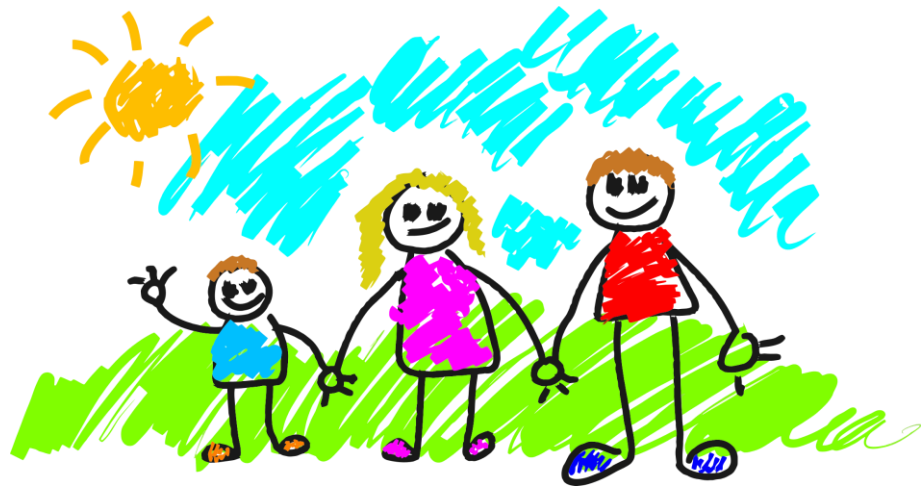


# Targets

- Ecologically connected biodiverse planting – 600ha actual 440ha
- Protect and enhance native vegetation- 1300ha actual 1668ha
- Manage threats to biodiversity-600ha actual 843ha

# How did we achieve these targets

- Working with landowners in the target area and engaging the broader community. Many cups of tea of which I am very grateful of!



# Connecting Corridors



- CSIRO research has shown:
- Bird and small mammal movement needs habitat patch of 10ha in size and no more than 1.1km apart
- Connected by stepping stones (clumps of trees or individual paddock trees) no more than 100 metres apart. (Doerr et al.2010)

# Buffers, Protection & Enhancement of Remnants



- By fencing existing remnants grazing can be controlled, remnants respond well to pulse grazing after a resting period coupled with the reintroduction of understory species.



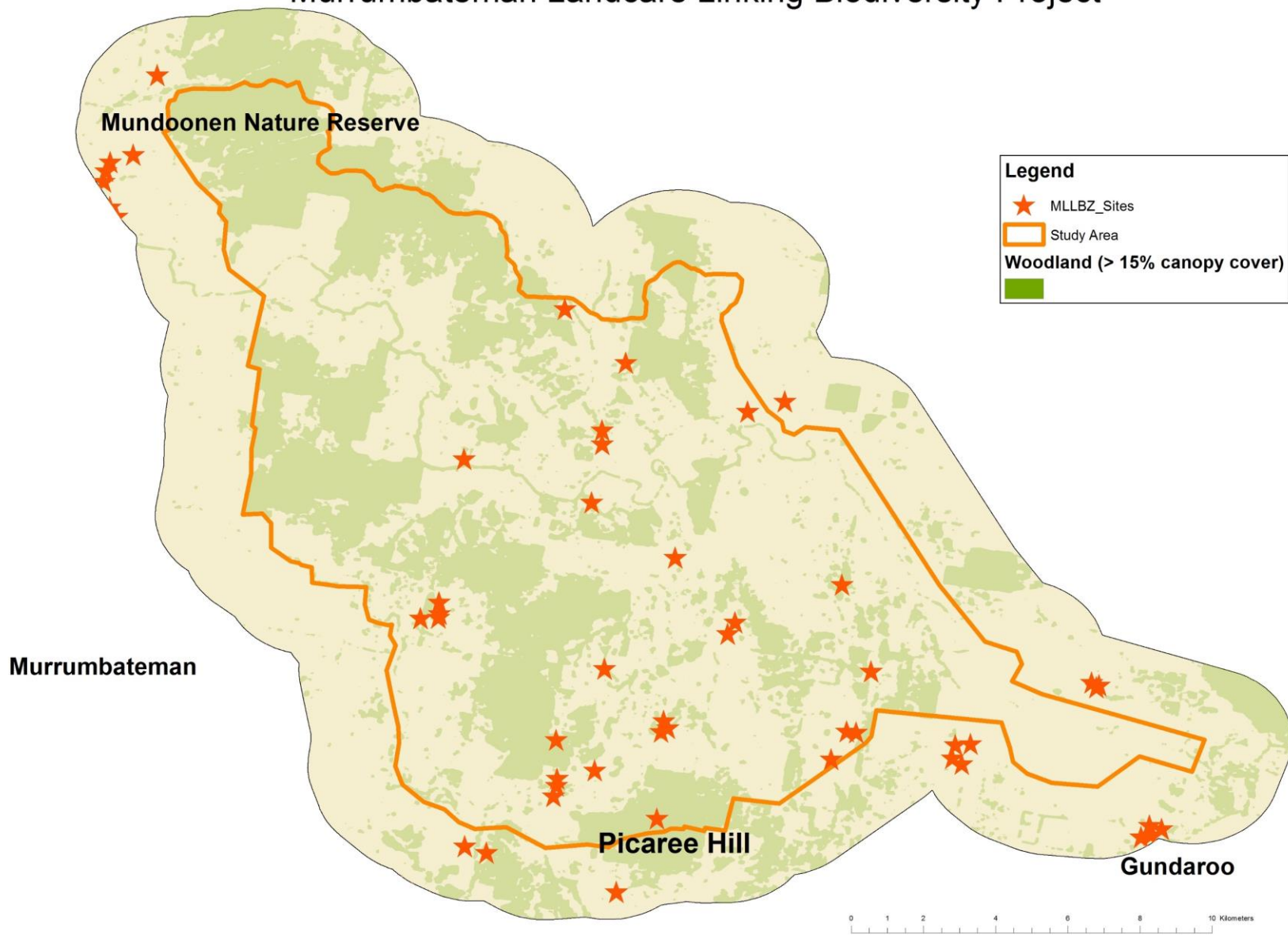
# Who got involved?

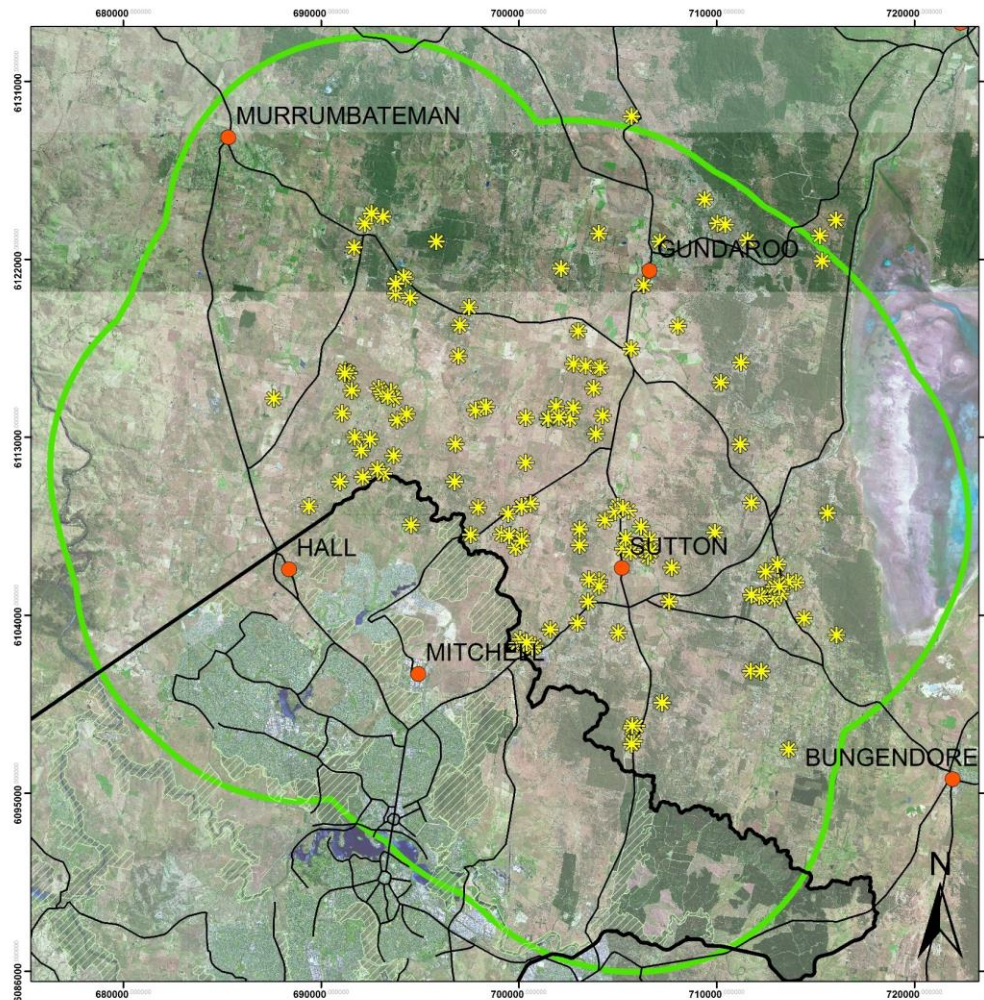
- 56 EOI's were pulled together by the Landcare group.
- 46 landowners received a site visit to discuss options.
- 38 Landowners signed up to a 10 year land managers agreement to undertake on-ground activities.
- These site visits are a great opportunity to discuss issues or concerns landowners may have on their property and it is also a great opportunity for the dissemination of up to date fact sheets and resources.

# How did the project assist landowners?

- The project had funding to assist landowners in the costs associated in purchasing fencing material, planting of indigenous and local native species, guards and stakes and direct seeding.
  - 18km of conventional fencing
  - 12,800 tubestock planted
  - 38km direct seeding (over 10,000 stems)
- Landowners were required to match the project funding with an in-kind contribution which comes from erecting a stock proof fence, site preparation for tubestock or direct seeding, follow up weed control, replacement planting if required and monitoring of general site condition.

# Murrumbateman Landcare Linking Biodiversity Project





# Greater Goorooyarroo Project Sites

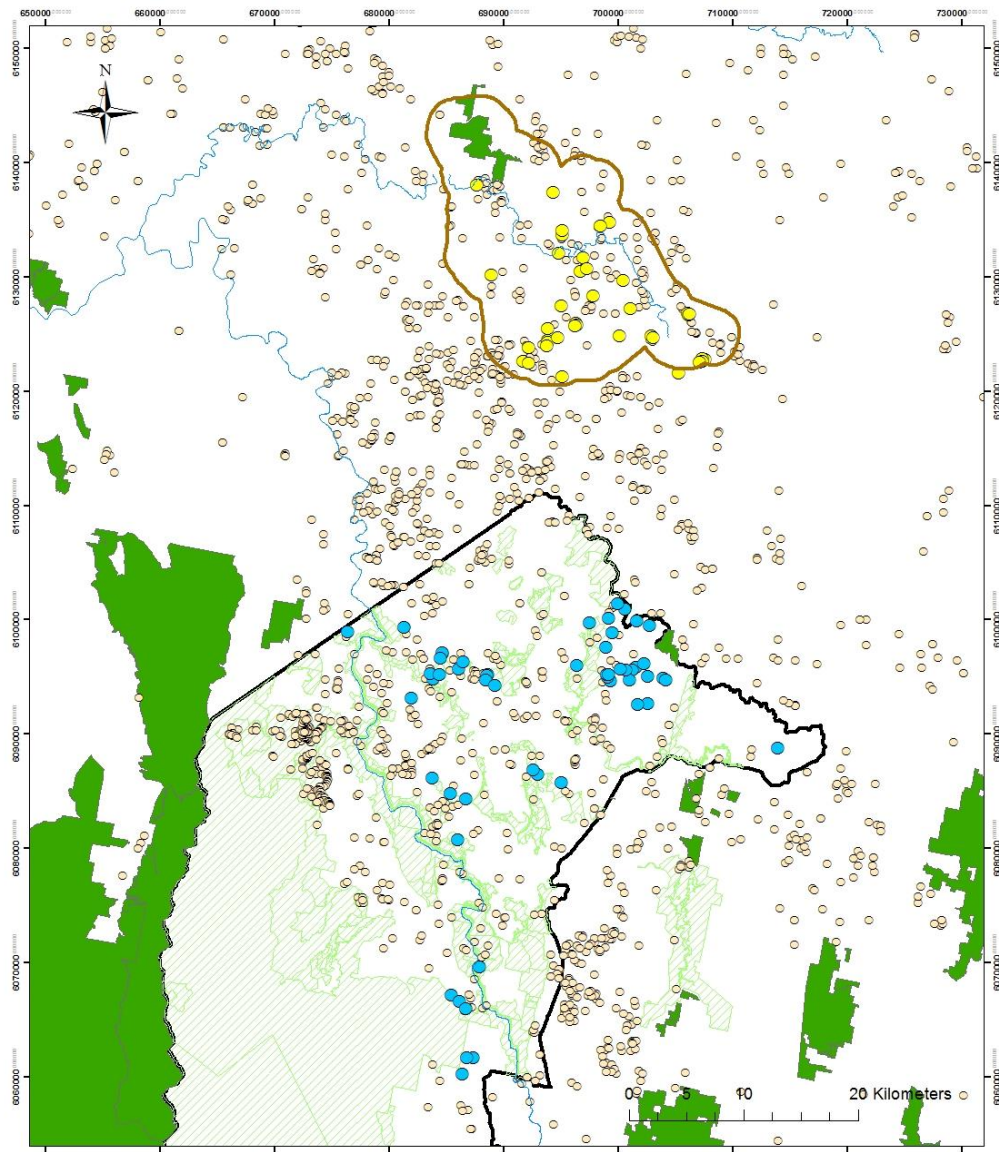
Map prepared on 23 November 2015  
 by Greening Australia Capital  
 Aerial data provided by ACT & NSW Govt

## Legend

-  SitePoints23Nov2015
-  Towns
-  Australian\_Roads
-  ACT Border
-  ACT Reserves
-  GoorooyarrooArea\_Buffer

0 1.5 3 6 9 12  
 Kilometers





## Goorooyarro, Murrumbateman Landcare and ACT woodlands Project Sites 1 July 2014

Data provided by ACT and NSW Governments  
 Map prepared by Greening Australia  
 Capital Region for Greater Goorooyarro,  
 Murrumbateman Landcare and ACT Woodlands  
 project use only - 2 July 2014

- Legend**
- ACTWoodlands Project Sites
  - ACT Border
  - Murrumbateman Project Sites
  - Murrumbateman LLB Project Area
  - Greater Goorooyarro Project Sites
  - Goorooyarro Study Area
  - All GACR Project Sites
  - npws\_estate
  - ACT Reserved Lands
  - Main Rivers

# Community Engagement and Events Held

- Regular plant propagation and maintenance at Greening Australia community nursery and Murrumbateman Landcare nursery.
- Seed collecting, cleaning and storage.
- Community Tubestock planting
- Farm walks
- Wild flower walks and bird identification
- Department tours
- Weed identification workshops
- Plant identification walks
- Murrumbateman field day displays.
- Green Army

- Over 25 community engagement events were held with 350 volunteers attending, excluding the Murrumbateman field day.
- 45,000 plants propagated between the two nurseries, with 12,800 plants directly used in this project, the remainder were used in connecting project such as the Greater Goorooyarroo, Yass Rivers of Carbon and ACT Woodlands.



# Sites and Their Story

- 80ha paddock was protected by destocking for 5yrs followed by strategic grazing.

Several wild flower and bird Id workshops were held on this site





# Seed Production



# Connecting Corridors



# Forbs Trial



Aim to establish populations of native forbs in grasslands



Flowering Kangaroo grass 9 months after burning

# Scattered Trees and Shrubs





# Size Doesn't Matter











# Thank You

